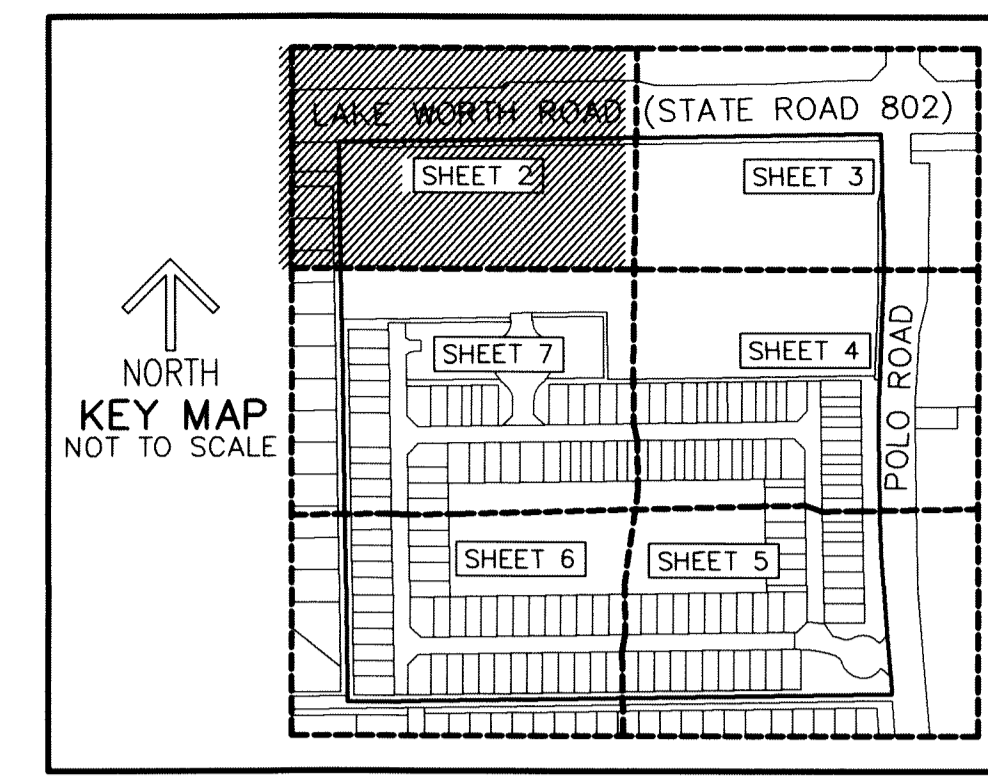


THIS INSTRUMENT PREPARED BY
DAVID P. LINDLEY
OF
CAULFIELD and WHEELER, INC.
SURVEYORS - ENGINEERS - PLANNERS
7900 GLADES ROAD, SUITE 100
BOCA RATON, FLORIDA 33434 - (561)392-1991
CERTIFICATE OF AUTHORIZATION NO. LB3591

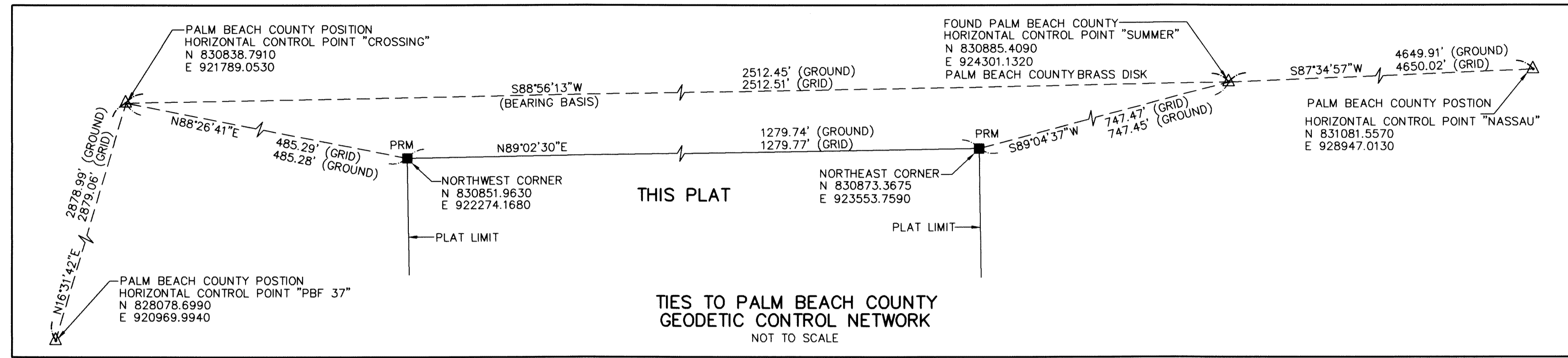
POLO LEGACY MXP

A MIXED USE PLANNED DEVELOPMENT
BEING A REPLAT OF ALL OF TRACT 11 AND A PORTION OF TRACTS 5, 6 AND 12, BLOCK 28,
TOGETHER WITH THE NORTH 15 FEET OF THE 30 FOOT RIGHT-OF-WAY LYING SOUTH OF AND ADJACENT TO SAID
TRACTS 11 AND 12, BLOCK 28, THE PALM BEACH FARMS CO. PLAT NO. 3,
AS RECORDED IN PLAT BOOK 2, PAGE 45 THROUGH 54 OF THE PUBLIC RECORDS OF PALM BEACH COUNTY, FLORIDA,
LYING IN SECTION 29, TOWNSHIP 44 SOUTH, RANGE 42 EAST, PALM BEACH COUNTY, FLORIDA



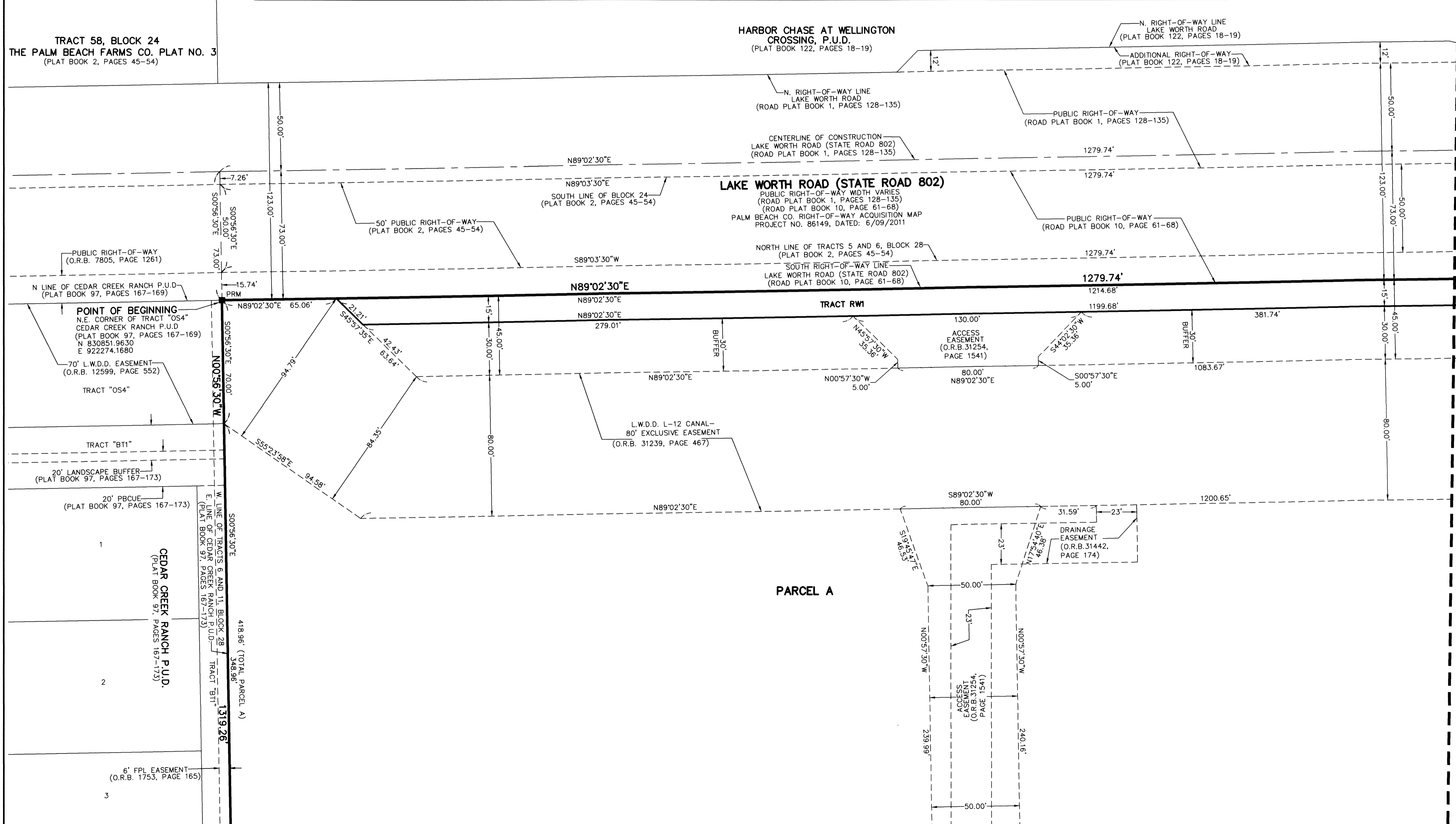
139

SHEET 2 OF 7

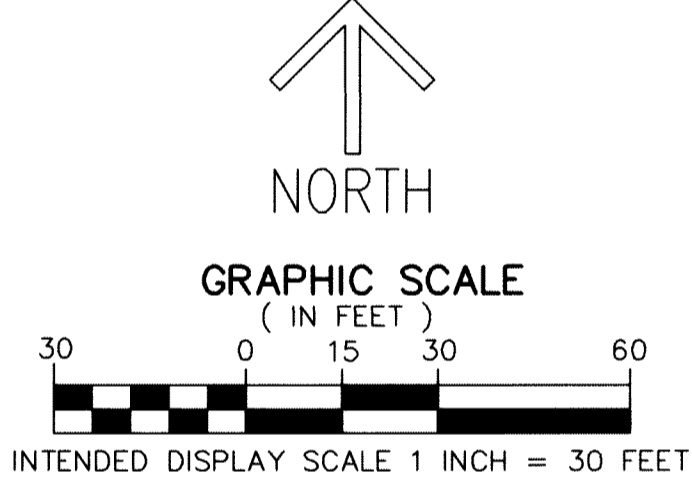


TRACT 58, BLOCK 24
THE PALM BEACH FARMS CO. PLAT NO. 3
(PLAT BOOK 2, PAGES 45-54)

HARBOR CHASE AT WELLINGTON
CROSSING, P.U.D.
(PLAT BOOK 122, PAGES 18-19)



MATCH LINE SHEET 3



- LEGEND/ABBREVIATIONS**
- ⊖ - CENTERLINE
 - Δ - DELTA (CENTRAL ANGLE)
 - CB - CHORD BEARING
 - CD - CHORD DISTANCE
 - DE - DRAINAGE EASEMENT
 - E - EASTING (WHEN USED WITH COORDINATES)
 - L - ARC LENGTH
 - LB - LICENSED BUSINESS
 - LMAE - LAKE MAINTENANCE ACCESS EASEMENT
 - LME - LAKE MAINTENANCE EASEMENT
 - L.W.D. - LAKE WORTH DRAINAGE DISTRICT
 - MXP - MIXED USE PLANNED DEVELOPMENT
 - N - NORTHING (WHEN USED WITH COORDINATES)
 - O.R.B. - OFFICIAL RECORD BOOK
 - PBCUE - PALM BEACH COUNTY UTILITY EASEMENT
 - PRAS - PRIVATE RESIDENTIAL ACCESS STREET
 - PC - POINT OF CURVATURE
 - PT - POINT OF TANGENCY
 - PNT - POINT OF NON-TANGENCY
 - R - RADIUS
 - R/W - RIGHT-OF-WAY
 - UE - UTILITY EASEMENT
 - WMAE - WATER MANAGEMENT ACCESS EASEMENT
 - PRM - DENOTES SET PERMANENT REFERENCE MONUMENT 4" x 4" x 24" CONCRETE MONUMENT WITH ALUMINUM DISK STAMPED "C&W PRM LB3591" UNLESS OTHERWISE NOTED
 - PCP - DENOTES SET PERMANENT CONTROL POINT NAIL AND METAL DISK STAMPED "PCP LB3591"
 - △ - DENOTES HORIZONTAL CONTROL POINT
 - ▲ - DENOTES SET PERMANENT REFERENCE MONUMENT NAIL AND DISC STAMPED "PRM" LB 3591

NOTES

COORDINATES, BEARINGS AND DISTANCES

COORDINATES SHOWN ARE GRID
DATUM = NAD 83 (1990 ADJUSTMENT)
ZONE = FLORIDA EAST
LINEAR UNIT = US SURVEY FEET
COORDINATE SYSTEM 1983 STATE PLANE
TRANSVERSE MERCATOR PROJECTION
ALL DISTANCES ARE GROUND UNLESS OTHERWISE NOTED
SCALE FACTOR = 1.0000236
GROUND DISTANCE X SCALE FACTOR = GRID DISTANCE
BEARINGS AS SHOWN HEREON ARE GRID DATUM
NAD 83 (1990 ADJUSTMENT), FLORIDA EAST ZONE.

MATCH LINE SHEET 7